

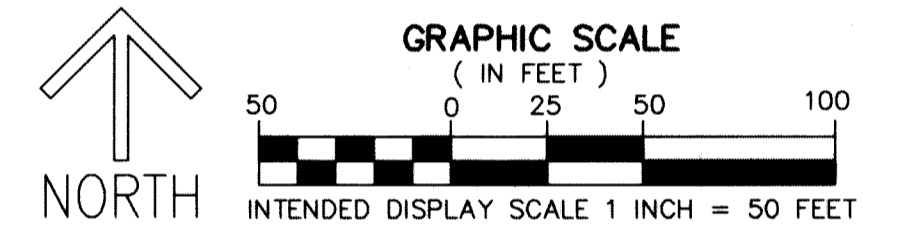
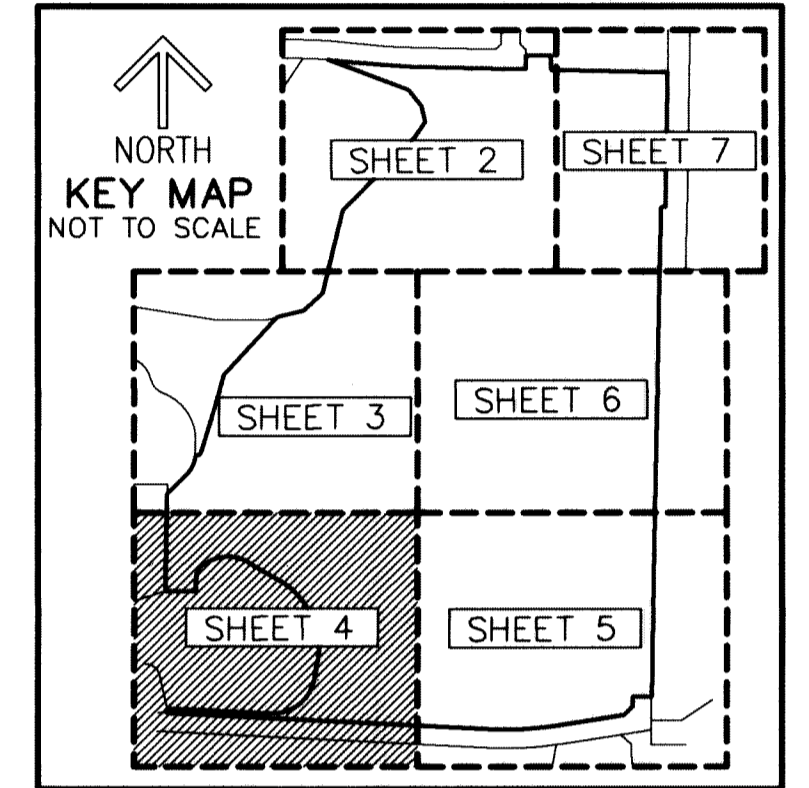
THIS INSTRUMENT PREPARED BY
DAVID P. LINDLEY
OF
CAULFIELD and WHEELER, INC.
SURVEYORS - ENGINEERS - PLANNERS
7900 GLADES ROAD, SUITE 100
BOCA RATON, FLORIDA 33434 - (561)392-1991

PALM BEACH PARK OF COMMERCE, P.I.P.D.-PLAT 29-PROJECT ENERGY

BEING A PORTION OF SECTION 17, TOWNSHIP 41 SOUTH, RANGE 41 EAST, PALM BEACH COUNTY, FLORIDA

49

SHEET 4 OF 7

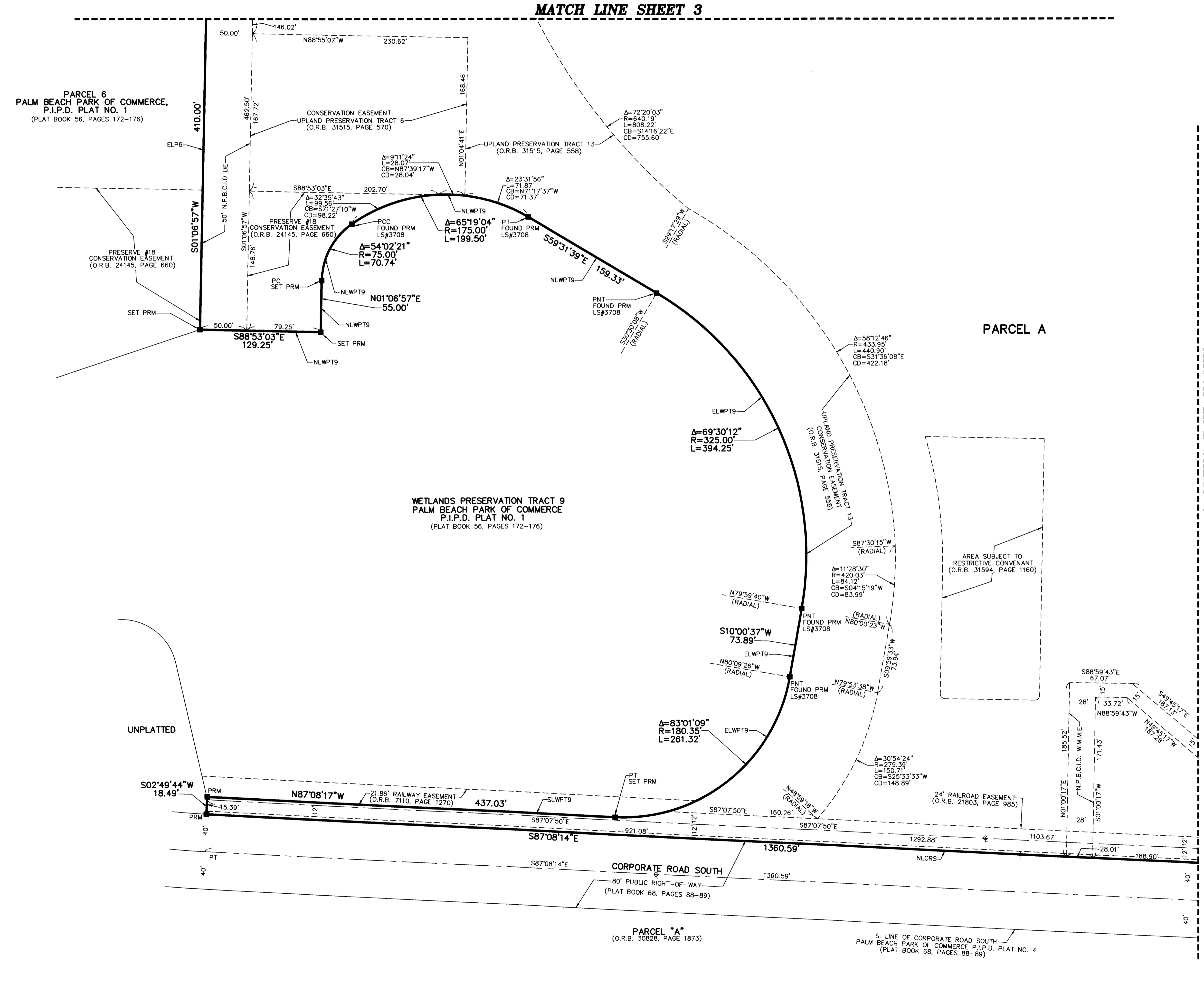


COORDINATES, BEARINGS AND DISTANCES

COORDINATES SHOWN ARE GRID
DATUM = NAD 83 1990 ADJUSTMENT
ZONE = FLORIDA EAST
LINEAR UNIT = US SURVEY FEET
COORDINATE SYSTEM 1983 STATE PLANE
TRANSVERSE MERCATOR PROJECTION
ALL DISTANCES ARE GROUND UNLESS OTHERWISE NOTED
SCALE FACTOR = 1.0000070
GROUND DISTANCE X SCALE FACTOR = GRID DISTANCE
BEARINGS AS SHOWN HEREON ARE GRID DATUM,
NAD 83 1990 ADJUSTMENT, FLORIDA EAST ZONE.

LEGEND/ABBREVIATIONS

- CL - CENTERLINE
- Δ - DELTA (CENTRAL ANGLE)
- L - ARC LENGTH
- R - RADIUS
- CB - CHORD BEARING
- CD - CHORD DISTANCE
- DE - DRAINAGE EASEMENT
- N.P.B.C.I.D. - NORTHERN PALM BEACH COUNTY IMPROVEMENT DISTRICT
- LB - LICENSED BUSINESS
- O.R.B. - OFFICIAL RECORD BOOK
- PC - POINT OF CURVATURE
- PCC - POINT OF COMPOUND CURVATURE
- PRC - POINT OF REVERSE CURVATURE
- PNT - POINT OF NON-TANGENCY
- PT - POINT OF TANGENCY
- P.I.P.D. - PLANNED INDUSTRIAL PARK DEVELOPMENT
- N - NORTHING WHEN USED WITH COORDINATES
- E - EASTING WHEN USED WITH COORDINATES
- UE - UTILITY EASEMENT
- W.M.M.E. - WATER MANAGEMENT MAINTENANCE EASEMENT
- PRM - INDICATES SET 4" X 4" X 24" CONCRETE PERMANENT REFERENCE MONUMENT WITH ALUMINUM DISK STAMPED "PRM C&W LB3591" UNLESS OTHERWISE NOTED
- △ - DENOTES HORIZONTAL CONTROL POINT
- ✱ - INDICATES SECTION CORNER
- ✱ - INDICATES 1/4 SECTION CORNER
- ELCRN - EAST LINE OF CORPORATE ROAD NORTH AND WALGREENS DRIVE PLAT BOOK 91, PAGES 82-84
- SLCRN - SOUTH LINE OF CORPORATE ROAD NORTH AND WALGREENS DRIVE PLAT BOOK 91, PAGES 82-84
- ELWT15 - EAST LINE OF WETLAND TRACT 15 O.R.B. 6297, PAGE 1256
- ELPC-7 - EAST LINE OF PARCEL C-7 O.R.B. 7073, PAGE 210
- ELWPT8 - EAST LINE OF WETLANDS PRESERVATION TRACT 8 PALM BEACH PARK OF COMMERCE P.I.P.D. PLAT NO. 1 PLAT BOOK 56, PAGES 172-176
- ELP6 - EAST LINE OF PARCEL 6 PALM BEACH PARK OF COMMERCE P.I.P.D. PLAT NO. 1 PLAT BOOK 56, PAGES 172-176
- NLWPT9 - NORTH LINE OF WETLANDS PRESERVATION TRACT 9 PALM BEACH PARK OF COMMERCE P.I.P.D. PLAT NO. 1 PLAT BOOK 56, PAGES 172-176
- ELWPT9 - EAST LINE OF WETLANDS PRESERVATION TRACT 9 PALM BEACH PARK OF COMMERCE P.I.P.D. PLAT NO. 1 PLAT BOOK 56, PAGES 172-176
- SLWPT9 - SOUTH LINE OF WETLANDS PRESERVATION TRACT 9 PALM BEACH PARK OF COMMERCE P.I.P.D. PLAT NO. 1 PLAT BOOK 56, PAGES 172-176
- NLCRS - NORTH LINE OF CORPORATE ROAD NORTH PALM BEACH PARK OF COMMERCE P.I.P.D. PLAT NO. 4 PLAT BOOK 68, PAGES 88-89
- WLDRR - WEST LINE OF DONALD ROSS ROAD PALM BEACH PARK OF COMMERCE P.I.P.D. PLAT NO. 4 PLAT BOOK 68, PAGES 88-89
- NLDRR - NORTH LINE OF DONALD ROSS ROAD PALM BEACH PARK OF COMMERCE P.I.P.D. PLAT NO. 4 PLAT BOOK 68, PAGES 88-89
- WLPA - WEST LINE OF PARCEL A PALM BEACH PARK OF COMMERCE P.I.P.D. PLAT NO. 4 PLAT BOOK 68, PAGES 88-89



MATCH LINE SHEET 5

MATCH LINE SHEET 3

PARCEL 6
PALM BEACH PARK OF COMMERCE,
P.I.P.D. PLAT NO. 1
(PLAT BOOK 56, PAGES 172-176)

PARCEL A

WETLANDS PRESERVATION TRACT 9
PALM BEACH PARK OF COMMERCE
P.I.P.D. PLAT NO. 1
(PLAT BOOK 56, PAGES 172-176)

PARCEL "A"
(O.R.B. 30828, PAGE 1873)

S. LINE OF CORPORATE ROAD SOUTH
PALM BEACH PARK OF COMMERCE P.I.P.D. PLAT NO. 4
(PLAT BOOK 68, PAGES 88-89)

UNPLATTED